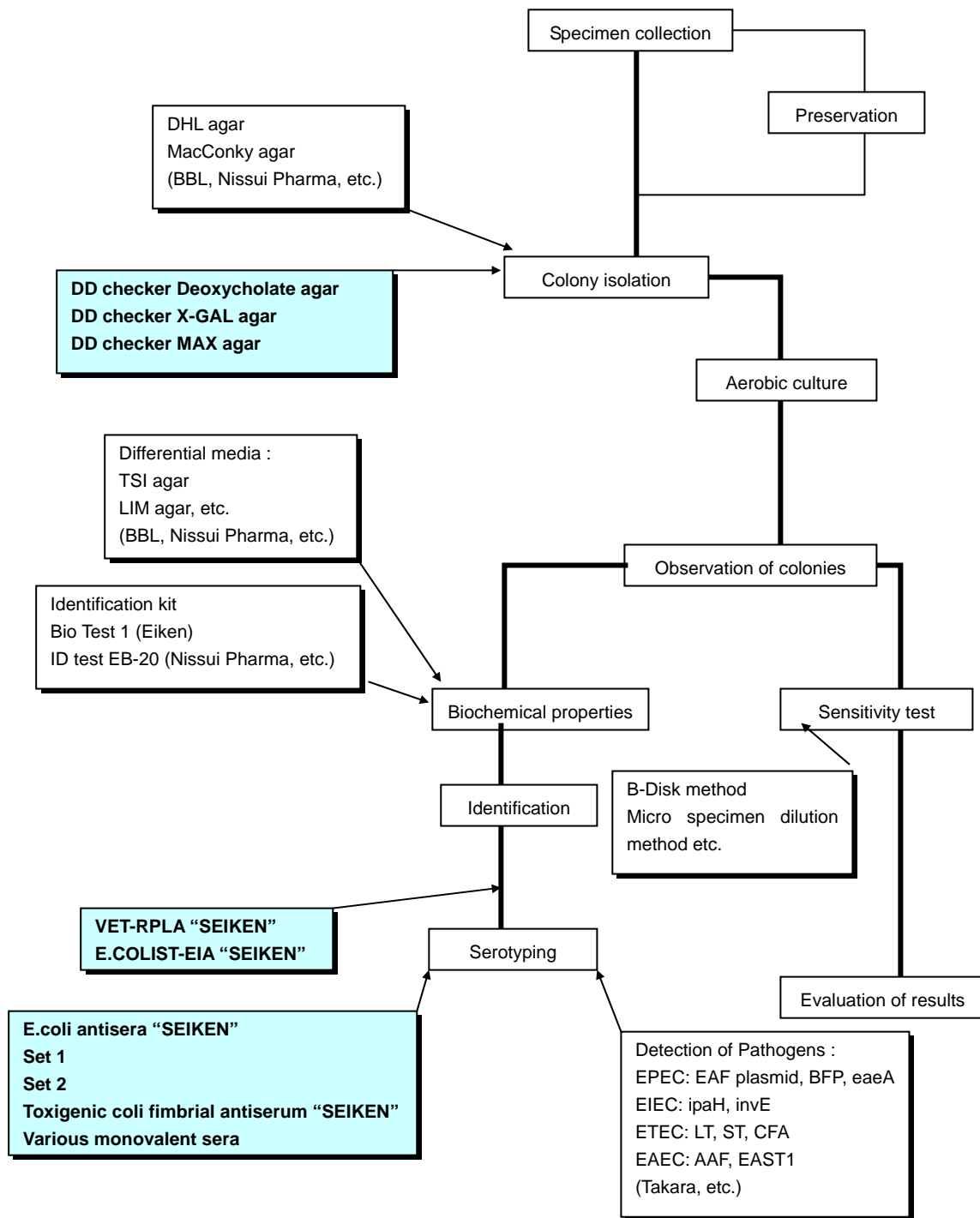


(II)-1 *Escherichia coli*



CE marked

Escherichia coli Antisera			
Set 1 (2mL x 8 polyvalent, 43 monovalent)		295347	
Polyvalent 1		296016	
O1	295583	O8	295996
O26	295903	O15	295750
O86a	296009	O115	295620
O111	295590	O169	295866
O119	295637	Polyvalent 7	
O127a	295675	O28ac	295927
O128	295682	O112ac	295606
Polyvalent 2		296023	O124
O44	295941	O136	295699
O55	295958	O144	295729
O125	295651	Polyvalent 8	
O126	295668	O29	295934
O146	295736	O143	295712
O166	295835	O152	295774
Polyvalent 3		296030	O164
Set 2(5mL x 22 H-antisera)		295354	
O18	295873	H-2	295422
O114	295613	H-4	295484
O142	295705	H-5	295538
O151	296767	H-6	295552
O157	295798	H-7	295569
O158	295804	H-9	295576
Polyvalent 4		296047	H-10
O6	295965	H-11	295378
O27	295910	H-12	295385
O78	295989	H-16	295392
O148	295743	H-18	295408
O159	295811	H-19	295415
O168	295859	H-20	295439
Polyvalent 5		296054	H-21
O20	295880	H-27	295446
O25	295897	H-28	295453
O63	295972	H-40	295477
O153	295781	H-41	295507
O167	295842	H-42	295514
		H-45	295521
		H-51	295545

CE marked

Supplementary E.coli Antisera			
Polyvalent II	292490	Polyvalent III	292506
O26, O55, O111		O86, O114, O125	
O119, O126		O127, O128	
Polyvalent IV	292513		
O44, O112			
O124, O142			

not CE marked

Toxigenic E.coli	
Pili Set	200457
K88	213877
K99	213884
987P	213891

Purpose: Serotyping of *Escherichia coli*

Features: Antisera for the typing of *E.coli* Group O and H antigens. These are available in two separate sets to accommodate the requirements of users. All items are also available in single polyvalent or monovalent vial form. (Refer to our complete product list on the previous page.)

Note: Perform Group O antigen serotyping by using the slide agglutination method. For H antigen-typing, first perform several cultures using a semi-fluid culture medium, then identify by using the test tube agglutination method. Antiserum names consist of the letter O or H followed by a number(s). Use only non-selective culture medium.

Contents of kits:

Set 1: For *E.coli* Group O antigen serotyping. (51 vials)

Set 2: For *E.coli* H antigen serotyping. (22 vials)

VET-RPLA

***Limited Supply**

Product Code 230010	Contents
V. cholerae Enterotoxin/E. coli heat-labile Enterotoxin Detection Kit	20 tests
<u>Kit contents:</u>	
Sensitized latex anti-enterotoxin	5 mL 1 vial
Control latex	5 mL 1 vial
Control enterotoxin (Lyophilized)	0.5 mL eq x 1 vial
Diluent	50 mL x 1 vial

*** Please inquire if you would like to know further information about this product.**

Purpose: Semi-quantitatively detects *E.coli* heat-labile enterotoxins(LT) by RPLA method using microplates (96 well, V-type).

Features: Heat-labile enterotoxins of enterotoxigenic *E.coli* are detected using animal or tissue culture cells. However, this LT test reagent does not require these cultures.

Note: As *E.coli* heat-labile enterotoxins and *Vibrio cholerae* enterotoxins share the same antigen factor, both can be detected using VET-RPLA. It should be noted; however, that the enrichment culture differs for each, and therefore prepared in the laboratory accordingly.

E. COLIST-EIA “SEIKEN”

Product Code 230133	Contents
E. coli Heat-stable Enterotoxin Detection Kit (ELISA)	96 tests
<u>Kit contents:</u>	
Antigen-coated plate	16 wells x 6 strips
Positive control	1 mL x 1 vial
Negative control	1 mL x 1 vial
Enzyme-labeled antibody	0.1 mL x 1 vial
Diluent for conjugate	1.5 mL x 1 vial
Substrate A	4 mL eq x 4 vials
Substrate B	30 mL x 1 vial
Stock wash solution (x 10 conc.)	60 mL x 1
Stopping reagent	12 mL x 1 vial
Plate holder	1 pc.

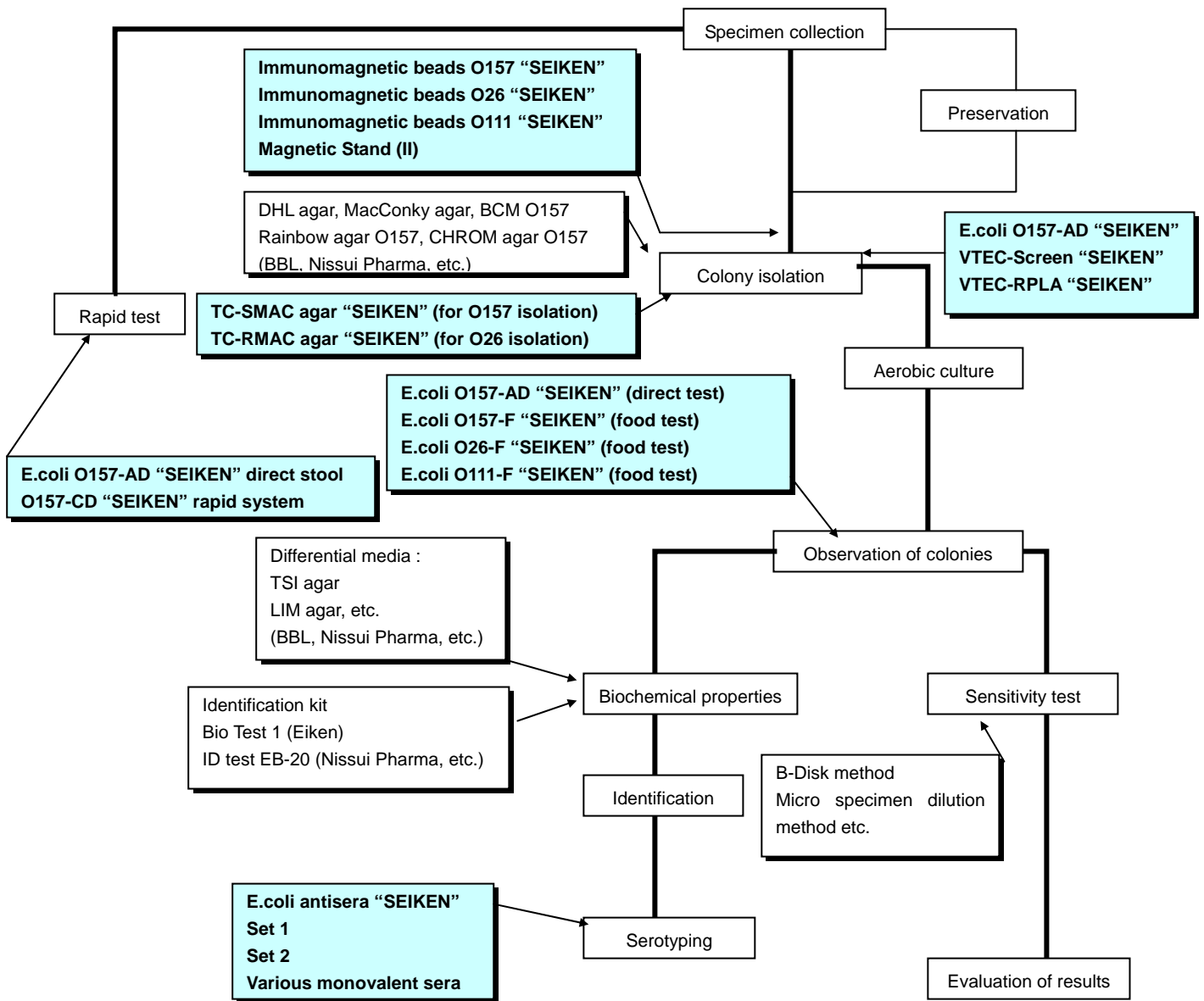
Purpose: Qualitatively detects *E. coli* heat-stable enterotoxins (ST) by EIA using microplates.

Features: Allows tests otherwise requiring the use of lactating mice to be performed qualitatively by the

microplate EIA method. Free of factors causing external differences such as size differences of animals, etc. Applies competitive reaction using the EIA method. Allows visual detection; however, negative-positive boundaries require the use of spectrophotometers for microplates. Use of break-apart plates reduces unnecessary use of the reagent.

Note: Prepare the enrichment culture in the laboratory.

(II)-2 Enterohemorrhagic *Escherichia coli* (EHEC)



E. coli O157-AD “SEIKEN”

Product Code 230552	Contents
E.coli O157 antigen detection by slide latex method	50 tests
<u>Kit contents:</u>	
Sensitized latex	2 mL x 1 vial
Control latex	2 mL x 1 vial
Positive control	1 mL x 1 vial
Extraction reagent 1	5 mL x 1 vial
Extraction reagent 2	5 mL x 1 vial
Extraction reagent 3	5 mL x 1 vial
Sterile swab	60 pcs.
Microcentrifuge tube	55 pcs.
Test card	30 pcs.

Purpose: For the specific detection of the *E. coli* O157 antigen by slide latex agglutination method.

Features: Reagent using sensitized anti-*E. coli* O157 monoclonal antibodies to latex particles. *E. coli* O157 can be detected both from single colonies and colony-concentrated areas on a culture medium.

E. coli O157 can also be directly identified from the stool of patients suspected of acute enterohemorrhagic *E. coli* infection. Results are obtained in as little as 10 minutes.

Note: The nitrous acid extraction procedure is required for a short period of time. Enterohemorrhagic *E. coli* infection is caused by the shigatoxins produced by O157, O26, and O111. Other serotype *E. coli* producing shigatoxins have been reported. Furthermore, even if the Group O and H antigen serum types belong to the enterohemorrhagic *E. coli* category, strains that do not produce shigatoxins are not enterohemorrhagic *E. coli*.

VTEC-RPLA

***Limited Supply**

Product Code 230553	Contents
Shigatoxin Detection Kit	20 tests
<u>Kit contents:</u>	
Sensitized latex (VT1)	5 mL x 1 vial
Sensitized latex (VT2)	5 mL x 1 vial
Control latex	5 mL x 1 vial
Control VT1 (Lyophilized)	5.0 mL eq x 1 vial
Control VT2 (Lyophilized)	5.0 mL eq x 1 vial
Diluent	50 mL x 1 vial

*** Please inquire if you would like to know further information about this product.**

Purpose: Semi-quantitatively detects *E.coli* shigatoxins by reversed passive latex agglutination(RPLA) method using microplates(96 well, V-type).

Features: Shigatoxin detection is basically carried out by cytotoxicity tests using Vero cells. However, this reagent does not require complicated procedures using cell culture, and is able to detect and differentiate both Shigatoxin type I(ST1) and type II(ST2) with sensitivity of 1ng/mL. It is 100% sensitive and specific when compared to the verocell assay for *E.coli* culture isolates.

Note: Use of enrichment medium is designated in the protocol. For shaking culture, CAYE culture is used. The centrifugal supernatant is used as the specimen. In the case of static culture, perform the polymixin B procedure on the bacteria cultured on BHI agar culture, and use the centrifugal supernatant as the specimen. Culture media and polymixin B are available separately.