

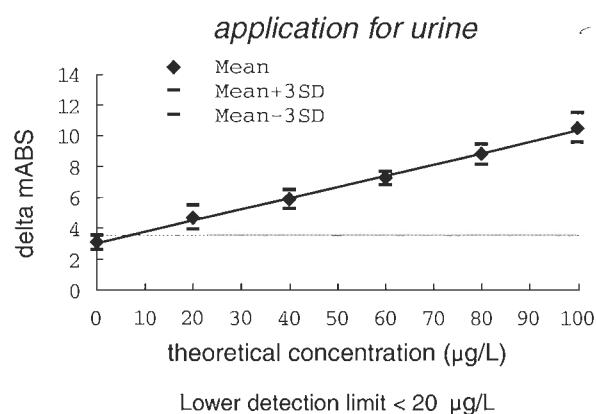
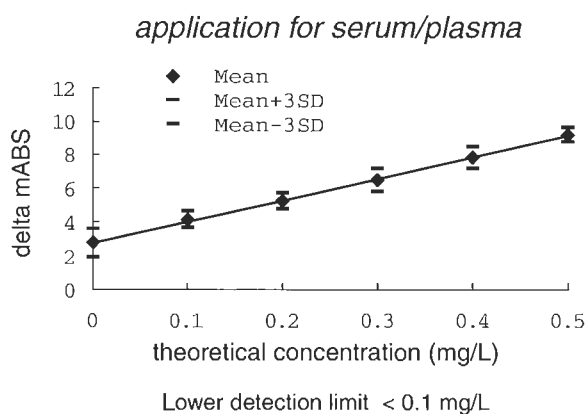
Reagent for Measuring  $\beta$ 2-microglobulin by latex-enhanced turbidimetric immunoassay

# BMG-LATEX X1 "SEIKEN"

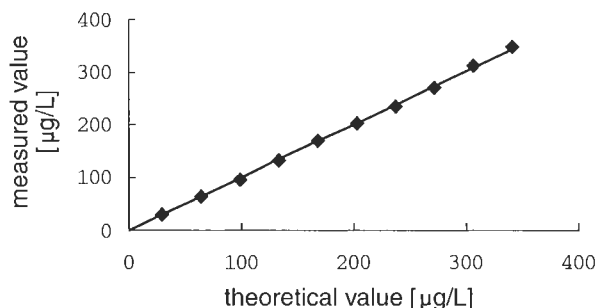
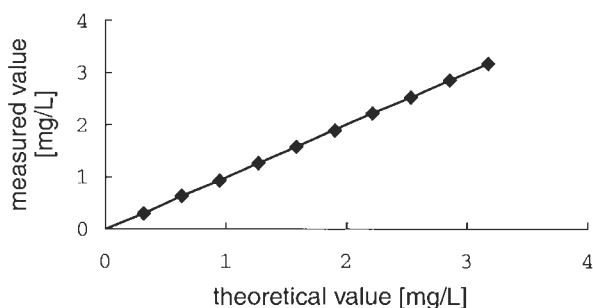
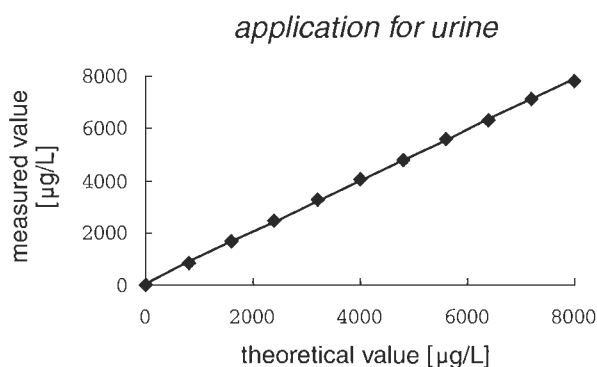
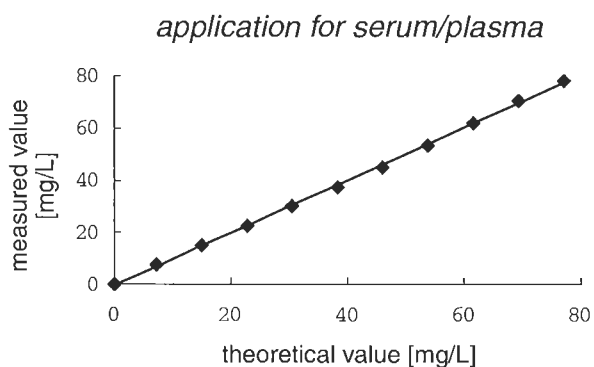
Application to both serum/plasma and urine  
Dynamic measuring range : 0.2 - 80 mg/L (serum), 30 - 8000  $\mu$ g/L (urine)  
High sensitivity and Wide range

## REFERENCE DATA (Hitachi 917)

### Lower detection limit



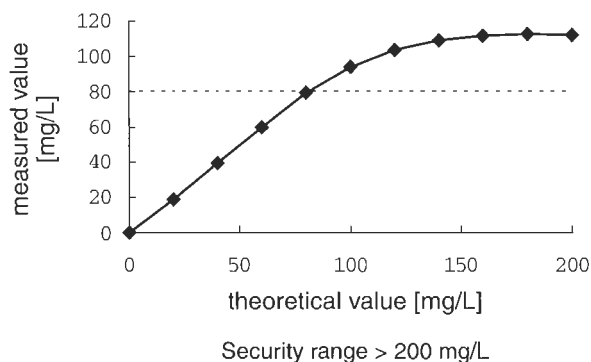
### Linearity



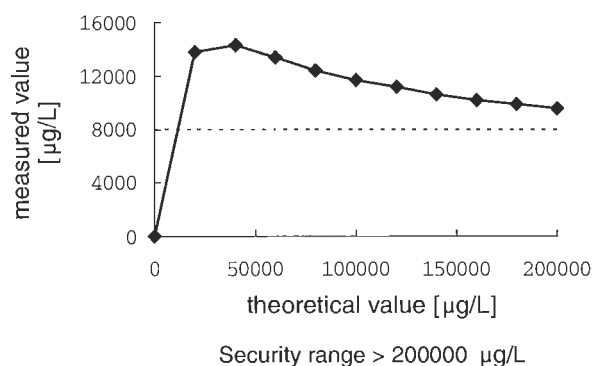
# REFERENCE DATA (Hitachi 917)

## Prozone

application for serum/plasma



application for urine



## Within-run precision

application for serum/plasma

Control	Low	Medium	High
N	20	20	20
Mean	0.613	1.777	7.632
MAX	0.68	1.82	7.80
MIN	0.59	1.74	7.57
Range	0.09	0.08	0.23
SD	0.022	0.020	0.050
%CV	3.5	1.1	0.7

application for urine

Control	Low	Medium	High
N	20	20	20
Mean	106.1	212.6	1879.5
MAX	111	218	1891
MIN	98	207	1868
Range	13	11	23
SD	3.9	3.0	6.3
%CV	3.6	1.4	0.3

## Comparison with other method

