

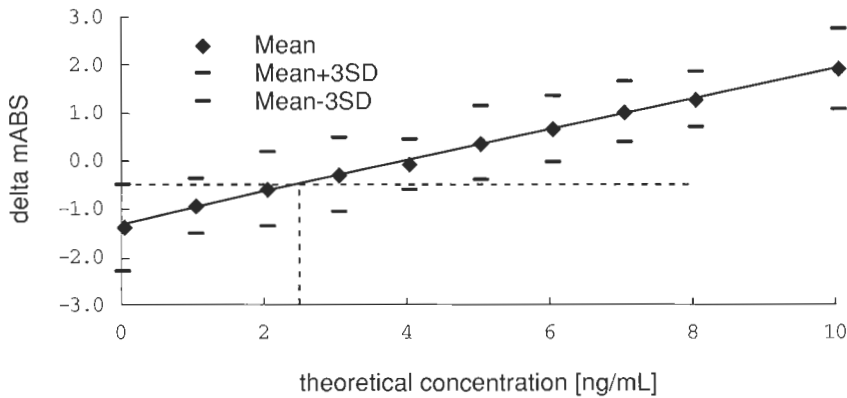
Reagent for Myoglobin by latex-enhanced turbidimetric immunoassay

Mb-LATEX CN "SEIKEN"

Application to both serum and plasma
Dynamic measuring range : 10 - 800ng/mL

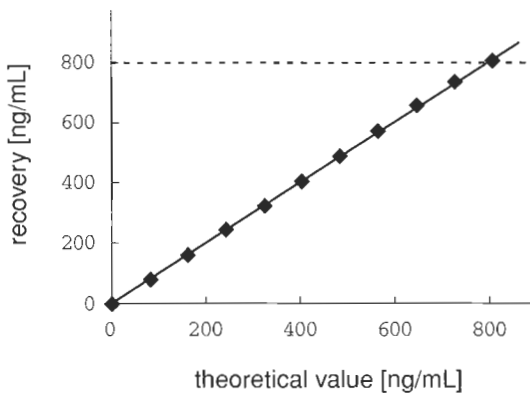
REFERENCE DATA (Hitachi 917)

Lower limit of detection

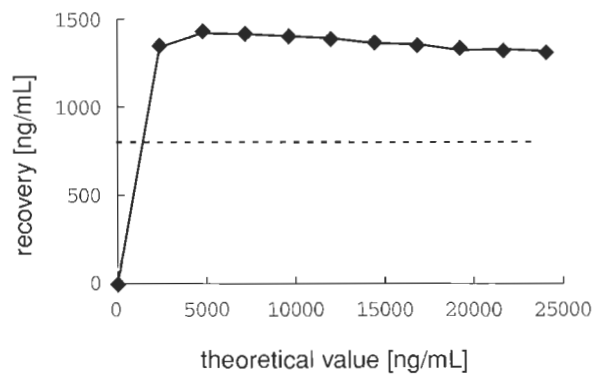


Linearity / Prozone

Linearity



Prozone

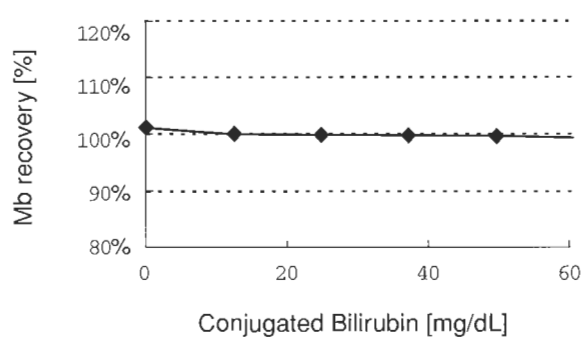
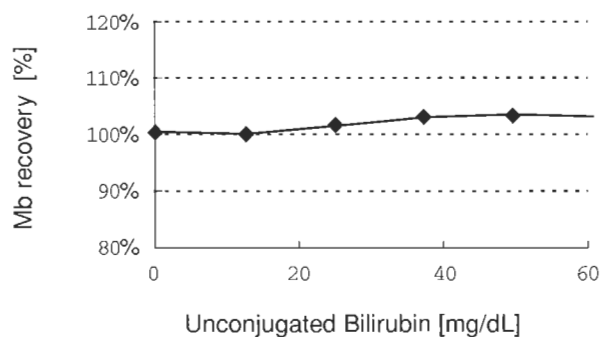
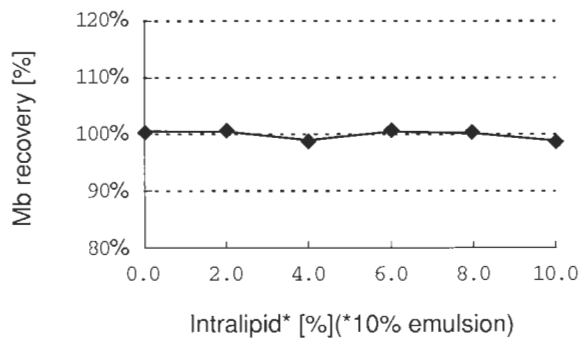
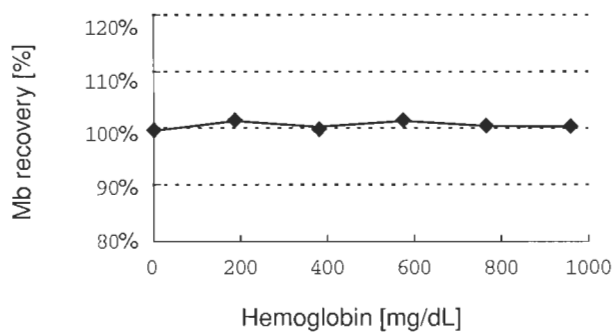


Precision

Control	Within-run			Between-day		
	Low	Mid	High	Low	Mid	High
N	21	21	21	21	21	21
MEAN	37.26	87.93	322.85	39.99	91.41	350.49
SD	0.68	0.66	1.43	0.84	0.85	2.23
%CV	1.82%	0.75%	0.44%	2.09%	0.94%	0.64%

REFERENCE DATA (Hitachi 917)

Interference



Correlation between Plasma and Serum

