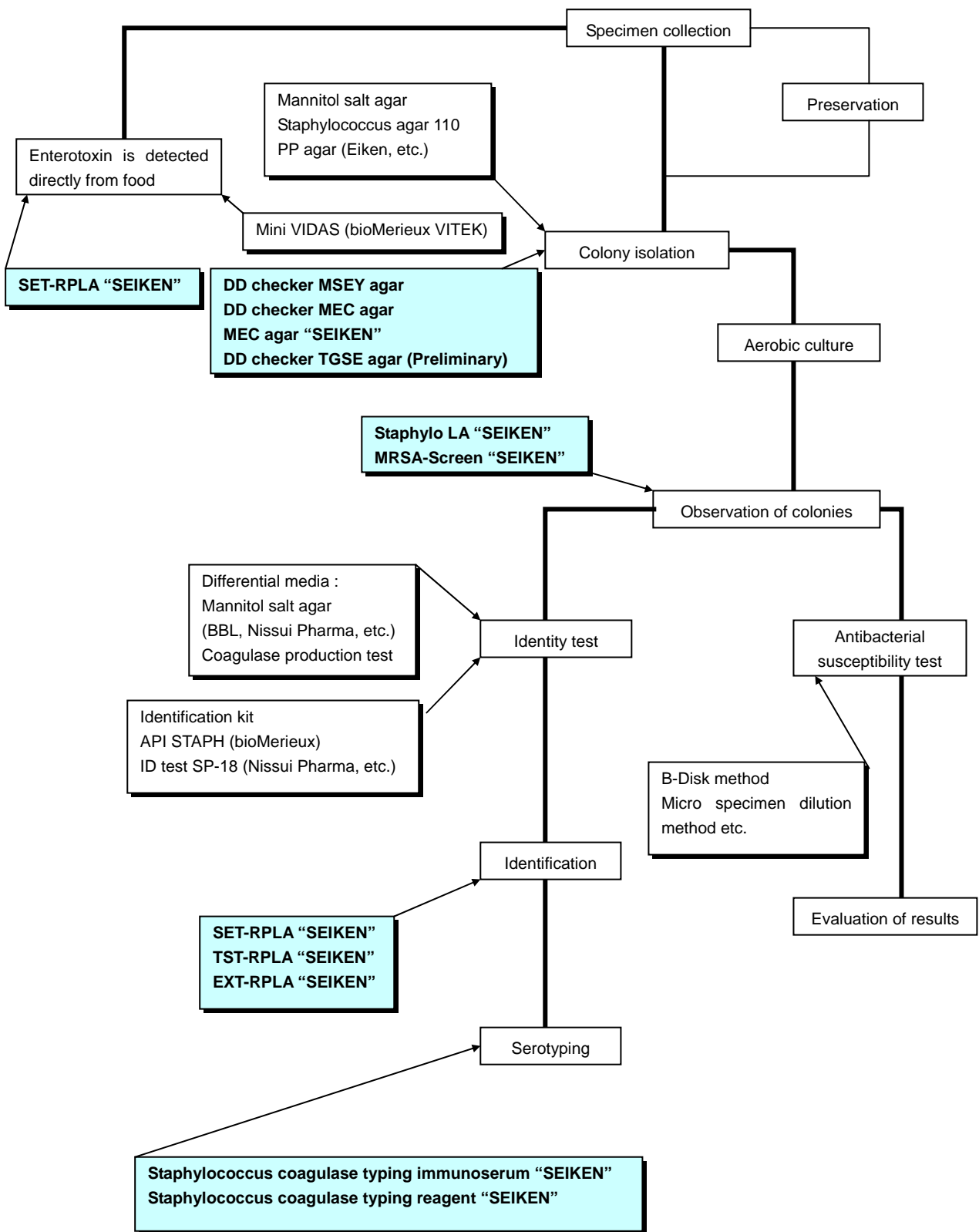


(VI) *Staphylococcus aureus*



CE Marked

Staphylococcal Coagulase Antisera	
Set (5 ml x 8)	270016
Type I	270061
Type II	270078
Type III	270085
Type IV	270092
Type V	270108
Type VI	270115
Type VII	270122
Type VIII	270139
Auxillary reagents	
Diluent	271020
Normal rabbit serum	271037
Normal rabbit plasma lyophilized	271044

Purpose: For the serotyping of *Staphylococcus aureus* coagulase.

Features: Antisera for the serotyping of the coagulase characteristically produced by *Staphylococcus aureus*. Available as a set for individual purchases, according to user requirements. Auxiliary reagents including normal rabbit serum, lyophilized normal rabbit plasma, and diluent are sold separately.

Note: The auxiliary reagents mentioned above are required to perform the test. When placing orders for purchases, note that normal rabbit serum and lyophilized normal rabbit plasma are easily mistaken.

Reference terminology

***Coagulase:** Externally produced protein by the *Staphylococcus*. Coagulates plasma by acting on the prothorombin in the plasma.

***Clamping factor:** Protein produced by *Staphylococcus* on the surface of the bacteria. Produces clots when bacteria and plasma mix by acting on the fibrinogen on the plasma.

***Protein A:** Internally and externally produced protein by *Staphylococcus*. Specifically binds to the Fc site of immunoglobulin G (IgG).

Staphylo-LA**CE Marked**

Product Code 296146	Contents
S. aureus screening by Slide Latex Agglutination	100 tests
<u>Kit contents:</u>	
Sensitized latex	6 mL x 1 vial
Test card	30 pcs.
Mixing stick	120 pcs.

Purpose: Identification of *Staphylococcus aureus* and other staphylococci by slide latex agglutination.

Features: Results correlate well with conventional methods such as coagulase production tests, etc. Allows direct testing of colonies on separated culture media. Easy to use and reaction time is about 20 seconds.

Note: Ensure that the bacteria and sensitizing latex are evenly mixed.

MRSA-Screen**CE Marked**

Product Code 230782	Contents
Rapid PBP2' Detection by Slide Latex Agglutination	50 tests
<u>Kit contents:</u>	
Sensitized latex	1.3 mL x 1 vial
Control latex	1.3 mL x 1 vial
Extraction reagent 1	10 mL x 1 vial
Extraction reagent 2	2.5 mL x 1 vial
Test card	30 pcs.
Mixing stick	110 pcs.

Purpose: Reagent for the detection of penicillin-binding protein 2' (PBP2').

Features: Correlates well with the results of the *mecA* gene tests. Allows extraction and detection of PBP2' directly from bacteria cultivated on agar culture medium. Test time is about 15 minutes. Due to the use of monoclonal antibodies, sensitivity and specificity are high. Identification is easy with the use of the slide latex agglutination method.

Note: PBP2' has also been found to exist in MRCNS (Methicillin-resistant coagulase-negative *Staphylococcus aureus*). When identifying MRSA, use together with Staphylo-LA "SEIKEN.

DD Checker MEC(selective agar culture medium)

Product Code 410382	Contents
MEC (Mannit Egg Yolk Ceftizoxime) agar plates for MRSA	20 pcs

Purpose: For the screening of MRSA and other antibiotic-resistant *Staphylococcus*.

Features: For the selective cultivation of MRSA and other antibiotic-resistant *Staphylococcus* with ceftizoxime, polymyxin B, carumonam, and amphotericin B. In particular, ceftizoxime has a strong PBP2' induction action compared to oxacillin, making the selective characteristic of the agar more reliable. PBP2' can be detected more precisely by testing bacteria cultivated on MEC agar culture medium by using MRSA-Screen "SEIKEN". *Staphylococcus aureus* can also be identified by observing mannitol solution and egg-yolk reaction.

Note: Culture temperature should not exceed 35°C.

SET-RPLA*Research Use Only *Limited Supply*

Product Code 230829	Contents
Staphylococcal Enterotoxin A-D Detection (RPLA)	20 tests
<u>Kit contents:</u>	
Sensitized latex anti-enterotoxin A	5 mL x 1 vial
Sensitized latex anti-enterotoxin B	5 mL x 1 vial
Sensitized latex anti-enterotoxin C	5 mL x 1 vial
Sensitized latex anti-enterotoxin D	5 mL x 1 vial
Control latex	5 mL x 1 vial
Contol enterotoxin A (Lyophilized)	0.5 mL eq x 1 vial
Contol enterotoxin B (Lyophilized)	0.5 mL eq x 1 vial
Contol enterotoxin C (Lyophilized)	0.5 mL eq x 1 vial
Contol enterotoxin D (Lyophilized)	0.5 mL eq x 1 vial
Diluent	50 mL x 2 vials

*** Please inquire if you would like to know further information about this product.**

Purpose: For the detection of *staphylococcus* enterotoxins.

Features: *Staphylococcus* enterotoxins A to D can be detected by the reversed passive latex agglutination reaction method without the need for animal and tissue culture cells. The test has outstanding sensitivity and specificity. Easy to use with microplates.

TST-RPLA***Limited Supply**

Product Code 230041	Contents
Staphylococcal Toxic Shock Syndrome Toxin-1 (TSST-1) Detection (RPLA)	20 tests
<u>Kit contents</u>	
Sensitized latex	5 mL 1 vial
Control latex	5 mL 1 vial
Control TST (Lyophilized)	0.5 mL eq x 1 vial
Diluent	50 mL x 1 vial

*** Please inquire if you would like to know further information about this product.**

Purpose: For detection of TSST-1

Features: TSST-1 can be detected by the RPLA method without the need for animal or tissue cultured cells. Has outstanding sensitivity and specificity.

EXT-RPLA***Limited Supply**

Product Code 230492	Contents
Staphylococcal Exfoliative Toxin A & B Detection (RPLA)	20 tests
<u>Kit contents</u>	
Sensitized latex anti-exfoliative toxin A (EXT-A)	5 mL 1 vial
Sensitized latex anti-exfoliative toxin B (EXT-B)	5 mL 1 vial
Control latex	5 mL 1 vial
Control EXT-A (Lyophilized)	0.5 mL eq x 1 vial
Control EXT-B (Lyophilized)	0.5 mL eq x 1 vial
Diluent	50 mL x 1 vial

*** Please inquire if you would like to know further information about this product.**

Purpose: For detection of exfoliative toxins in culture supernates of *Staphylococcus aureus*.

Features: *Staphylococcus* exfoliative toxins can be detected by the RPLA method without the need for animal or tissue cultured cells. Has outstanding sensitivity and specificity.